



DARKFIELD

FLIGHT ACCESS PACK
FOR AUDIENCE MEMBERS

FLIGHT

CONTENTS

<u>ABOUT</u>	3
<u>WHAT TO EXPECT: OUTSIDE THE CONTAINER</u>	4-5
<u>WHAT TO EXPECT: INSIDE THE CONTAINER</u>	6-8
<u>WHAT TO EXPECT: DURING & AFTER THE SHOW</u>	9
<u>FAQs</u>	10-12

ABOUT THIS PACK

DARKFIELD shows are immersive experiences in shipping containers and require a different approach to accessibility than traditional theatre shows. This pack aims to guide audiences on what to expect from **FLIGHT**.

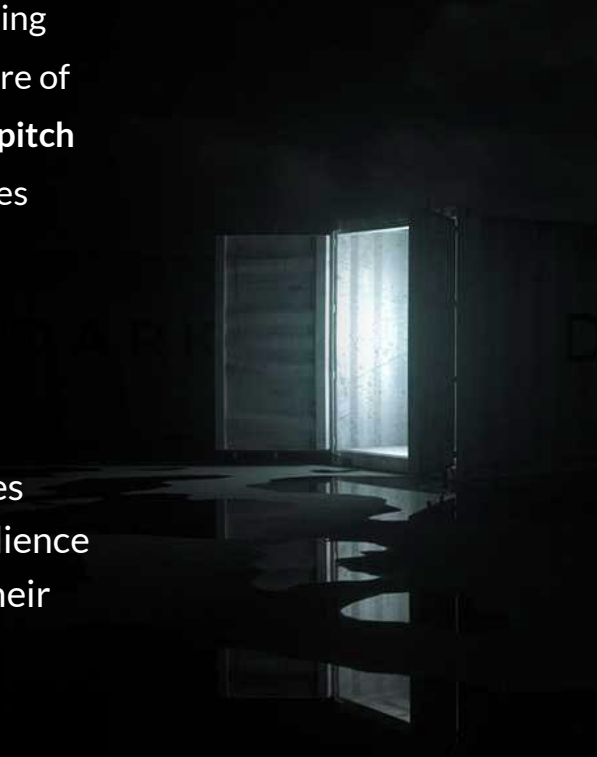


ABOUT

DARKFIELD creates immersive audio experiences, including **location-based** shipping container installations, and **digital** experiences. Audience members are at the centre of intense, evolving narratives using **360 degree binaural sound, striking set design, pitch darkness, and other sensory effects**. We work with partners to present experiences individually or as a collection, and to transmit digital experiences via our platform: **DARKFIELD RADIO**.

FLIGHT takes place in absolute darkness inside a 40ft shipping container. Its interior exactly resembles an Airbus 320 economy cabin, and over 30 minutes explores the Many-Worlds Interpretation of quantum mechanics, taking audience members through two worlds, two realities, and two possible outcomes to their journey. There are many worlds in which this plane lands safely.

FLIGHT has toured the UK, Australia and Korea extensively for the past 5 years. In 2022 **FLIGHT** opened in Taiwan and in 2023 it opened in Saudi Arabia.



WHAT TO EXPECT?

Before the show, outside the container

When you arrive, you will see a white shipping container with 'FLIGHT' written on its side. You should head to the end of it where you can see a door.

A staff member will check your tickets and ask you to wait until around five minutes before the start of the show. All of the audience members will then be briefed on health and safety and what to expect during the show.

The audience will then be let inside together.



WHAT TO EXPECT?

Before the show, outside the container

After the audience briefing, you will make your way inside the container. You will enter using either an outside step that is 26cm high and an inside step that is 13.5cm high or two ramps that are approximately 71cm wide.

As you are coming inside the container, our staff will give you your boarding card. This is yours to keep after the show. You will only not receive a boarding card if there is a small group coming to see the show.

You will be able to hear some sounds coming from the container, which are a part of the experience and will become louder when the doors are open.



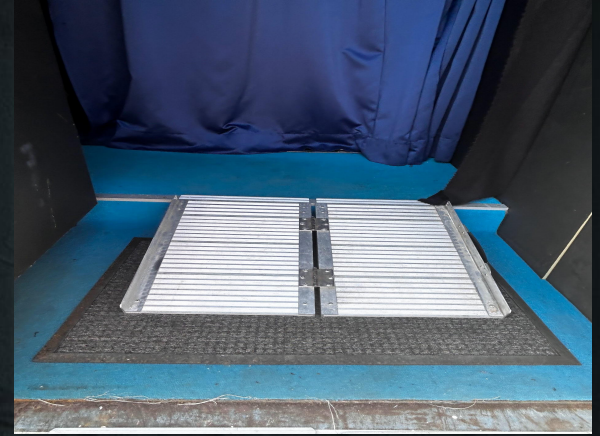
WHAT TO EXPECT?

Before the show, inside the container

When you enter the container, you will go through a short hall that is approximately 71cm wide.

If the accessible row isn't taken out to make space for a wheelchair or powerchair, you will see a blue curtain in the entrance.

Once you enter, you will see a blue curtain on your left side, rows with three seats each on your right. Seats have overhead lockers and some small screens above.



Each row has three seats facing away from the entry/exit. Seats have armrests that you can move up and down, as well as seat belts that you can fasten, just like in a plane.

To the right from the seats you will see airplane windows. You will find your headphones on the back of the seat in front of you. In case of the first row, they will be on the wall in front.



Before the show you can put your belongings in the overhead lockers. If you need assistance with that, our staff will be happy to help, just let them know.

You will be reminded to turn off all light-emitting devices and our staff member will wait to see if you have any issues with your headphones. You should be able to hear binaural audio 'travelling' in your headphones.

Then our staff member will leave the container and close the door. The door will remain closed, but unlocked during the show. The Technical Operator will be inside the tech control room, running the show, and a front-of-house staff member will be outside at all times.



WHAT TO EXPECT?

During the show

When the show starts, there will be a black out where you can experience how dark it's going to be and you can decide if you want to stay. The lights will come back on and stay on for a around a minute, giving you a chance to leave. You can leave the same way you entered. If you need more time to go out for any reason, please let our staff know before the start of the show - they will make sure to allocate enough time for you to leave if you choose to do so.

After the lights are turned off again, you need to stay seated for your own safety. You will experience a complete blackout during the show, attempts to move around can cause you to hurt yourself.

FAQs

Is FLIGHT suitable for those who suffer from claustrophobia or experience hallucinations?

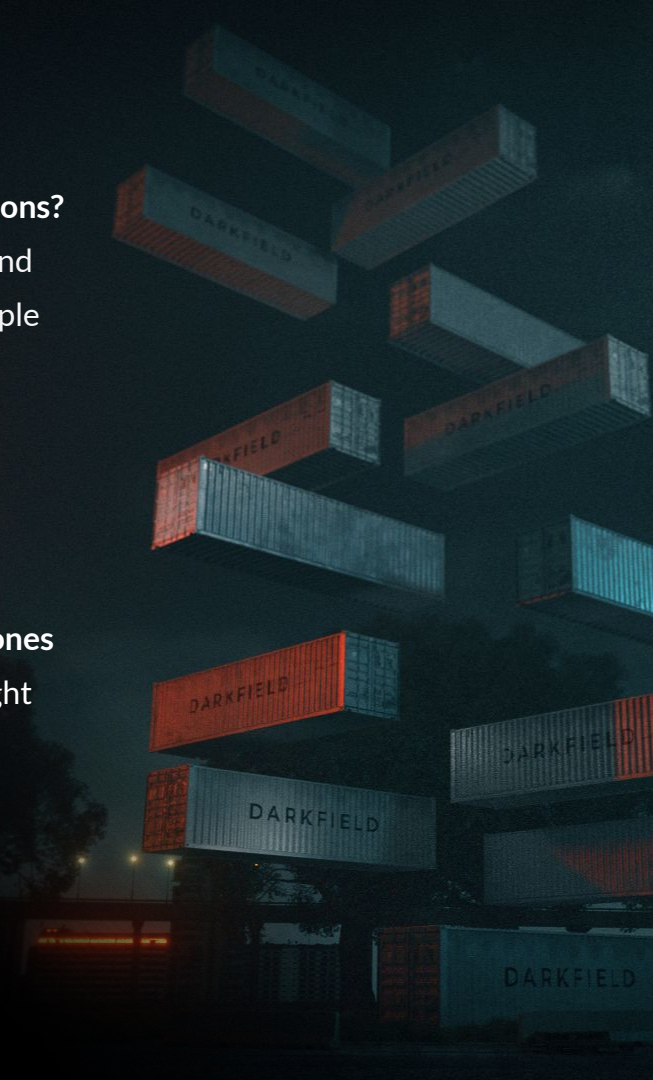
DARKFIELD experiences take place in blackout conditions inside a shipping container and may not be suitable for those with claustrophobia. FLIGHT is not recommended for people who experience hallucinations due to the subject of the show and its immersive nature.

Can I leave the container once the experience has started?

Please note that **FLIGHT** audiences are asked to remain seated unless there is an emergency. This is to preserve the lighting and immersive environment for audience enjoyment, and to ensure everyone's safety. **If you wish, you may remove your headphones at any time.** Some background sounds may still be audible and some sensory effects might still be present.

Is there an age rating for DARKFIELD experiences?

DARKFIELD experiences are rated 14+



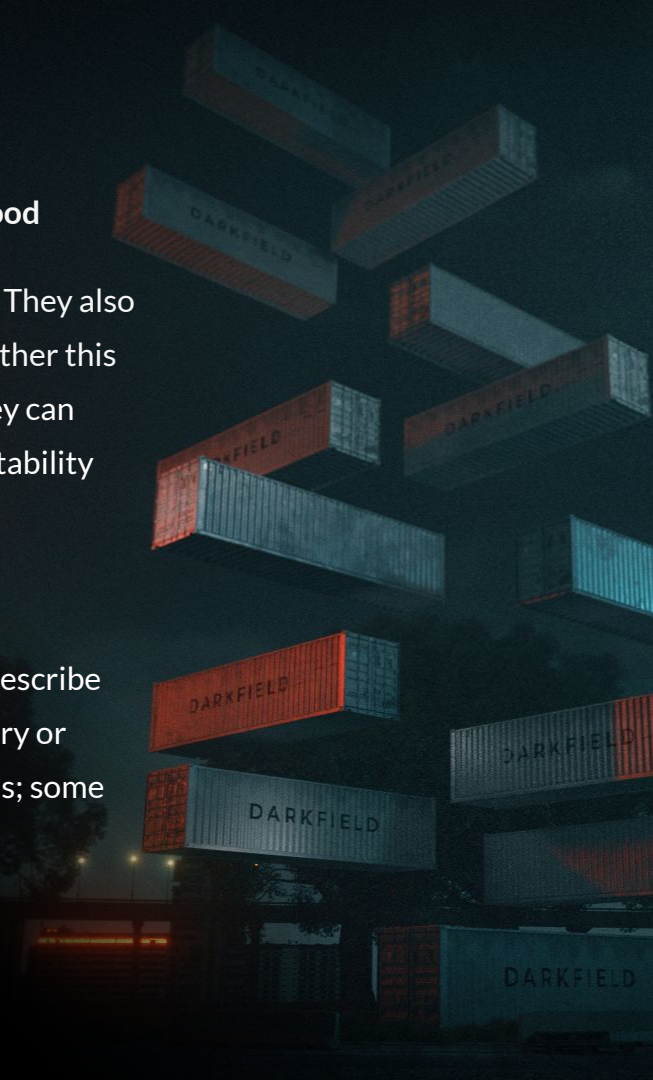
FAQs

Is DARKFIELD suitable for those who are pregnant or have heart conditions / high blood pressure?

DARKFIELD experiences are in the dark, quite loud, intense, and can be claustrophobic. They also involve some movement and/or vibration effects. We let audience members decide whether this would be suitable for them. Please note that our staff are not medical professionals. They can provide you with information about the show, but if you have any concerns about its suitability for you, you should speak to your medical team.

Is DARKFIELD scary?

Our shows explore anxiety and fear but also muse on philosophical themes. We would describe them as intense or unnerving, akin to *The Twilight Zone*. We avoid describing them as scary or terrifying, as that is not the aim of the work. Different audiences have different reactions; some find our shows scary, but others do not find them scary at all.



FAQs

Can I attend a DARKFIELD show if I have access requirements?

We have an access space in every show. Access space is a wheelchair accessible space, its location varies from show to show. In FLIGHT it is the first seat row when you enter. Our staff are always able to meet access patrons ahead of starting the show to allow sufficient time for transfer from a wheelchair and to allow sufficient time for patrons with mobility issues time to take a seat. Please let the venue know, or book an access ticket, so we know you are coming and can prepare the space and entry ramp into the container, if required. If you have specific access needs, let us know and we can advise how the experience can be adjusted for you.

Due to the nature of the shows, they are unfortunately not accessible to d/Deaf audiences. Our shows are relying on the sound and sensory effects, and we are working on solutions that would allow d/Deaf and hard of hearing audiences to participate in our shows.

We care about making our shows accessible. If you have any questions or feedback that you would like to share, please get in touch with us at info@darkfield.org

